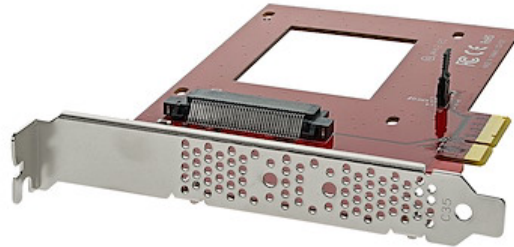


U.2 to PCIe Adapter for 2.5" U.2 NVMe SSD - SFF-8639 - x4 PCI Express 4.0

Product ID: PEX4SFF8639



Get ultra-fast data access by adding an NVMe U.2 SSD to your computer. This U.2 to PCIe adapter lets you add a high-speed, U.2 (4-lane PCIe) 2.5" NVMe SSD, such as the Intel 750 Series drive, to a PC with an available x4 PCI Express expansion slot.

You can mount the PCIe U.2 drive directly onto the adapter, giving you an easy and convenient way to improve your system performance and expand overall internal storage.

The expansion card lets you take full advantage of the fast performance and compact size of PCIe U.2 internal solid-state drives. The adapter connects directly to your computer motherboard to support an NVMe U.2 PCIe-based SSD through ultra-fast x4 PCIe. With the U.2 PCIe-based drive in place, the adapter gives your computer a significant speed boost.

The expansion card is equipped with a full-profile bracket and doesn't require an adapter cable for installation, this helps to reduce clutter and simplifies system builds. The drive connects directly to the SFF-8639 connector on the adapter, and the adapter connects directly to the computer motherboard.

The adapter is compatible with PCIe 4.0 motherboards and is also backward compatible with PCIe 3.0 / 2.0 / 1.0.

The PEX4SFF8639 is backed by a StarTech.com 2-year warranty and free lifetime technical support.

Certifications, Reports and Compatibility





Applications

- Upgrade your data-center or enterprise-level applications with U.2 NVMe SSD capability
- Utilize the advanced performance of a PCIe U.2 NVMe 2.5 in. SSD for intensive data workloads
- Work with large files more efficiently for audio/video production and editing
- Enhance productivity for data-heavy applications, ideal for developers and content creators

Features

- Boost system speed and performance by adding a PCIe NVMe U.2 SSD to your PC
- Simplify system builds with a U.2 to PCIe adapter that mounts your SSD directly to the adapter, with no need for adapter cables
- PCI Express 4.0 x4 lane host adapter
- Compatible with x4 PCIe 4.0 motherboards, and backward compatible with PCIe 3.0 / 2.0 / 1.0
- OS independent with no drivers required, for a fast, hassle-free setup

Hardware

Warranty	2 Years
Fan(s)	No
Interface	PCI Express
Bus Type	PCI Express
Number of Drives	1
Drive Size	2.5in
Compatible Drive Types	U.2 (PCIe, NVMe, SFF-8639)
Drive Installation	Fixed
Supported Drive Height(s)	15mm 12.5mm

9.5mm

7mm

5mm

Performance

Hardware Raid Supported No

Hot Swap Capability No

Connector(s)

Drive Connectors 1 - U.2 (PCIe, NVMe, SFF-8639)

Host Connectors 1 - PCI Express x4

Software

OS Compatibility OS independent; No software or drivers required

Special Notes / Requirements

Note Some U.2 drives make use of a feature called PWDIS which allows for remote power cycling of drives. Only Rev 03 and up of the PEX4SFFD8639 support this feature and work with drives that use it.

Indicators

LED Indicators 1 - Activity Terminal/Header

Environmental

Operating Temperature 5C to 50C (41F to 122F)

Storage Temperature -25C to 70C (-13F to 158F)

Humidity 15% ~ 90% RH

Physical Characteristics

Color Red

Material Steel

Product Length 6.5 in [16.5 cm]

Product Width 4.8 in [12.2 cm]

Product Height 0.9 in [2.2 cm]

Weight of Product 2.3 oz [65 g]

Packaging Information

Package Quantity 1

Package Length 8.5 in [21.6 cm]

Package Width 6.3 in [16 cm]

Package Height 0.8 in [2.0 cm]

Shipping (Package) Weight 5.7 oz [162.0 g]

What's in the Box

Included in Package

- 1 - drive adapter card
- 4 - drive-mounting screws
- 1 - quick-start guide

**Product appearance and specifications are subject to change without notice.*